



Why choose to study at Ysgol Dyffryn Nantlle's 6th form?

A Level and Welsh Baccaulaureate Skills Challenge Certificate results for Ysgol Dyffryn Nantlle Summer 2019

(Center Assessment Grades were issued in Summer 2020)

We saw an increase again in the number of A* to A, A* to B and A* to C.

A Level & equivalent

	A* to A	A* to B	A* to C	A* to E
2017	27.1%	45%	74%	100%
2018	31.2%	50%	74%	100%
2019	34.6%	52.6%	77.4%	100%

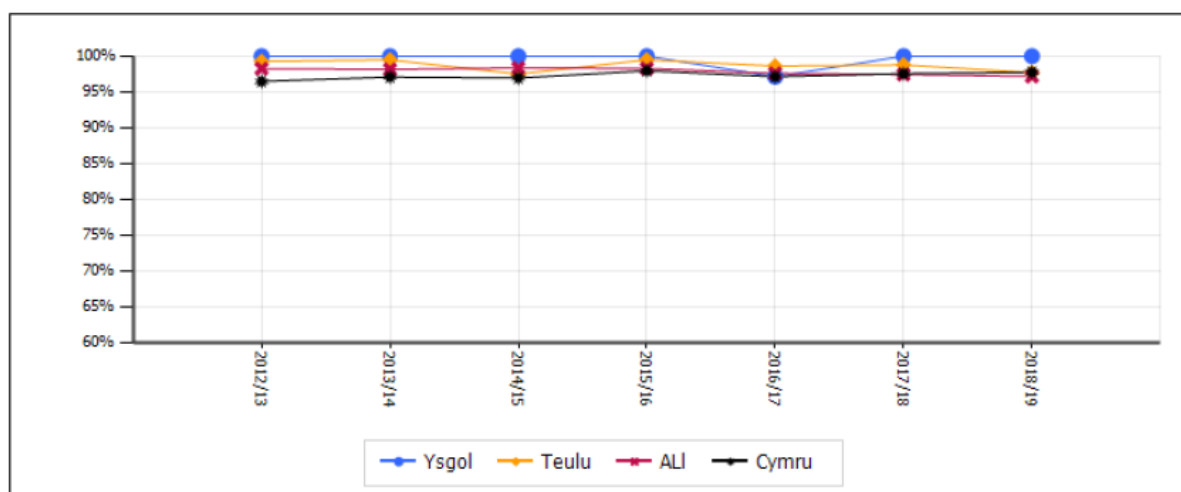
Welsh Baccaulaureate Skills Challenge Certificate

	A* to A	A* to B	A* to C	A* to E
2017	18%	30.3%	73%	100%
2018	21.4%	50%	79%	100%
2019	35%	47%	73.5%	97.1%

Every subject achieved 100% A* to E grades.

L3

1.1a % y rhai 17 mlwydd oed sy'n cyflawni (Noder: mae'r echelin-y yn y siart hwn yn rhedeg o 60% i 100%)

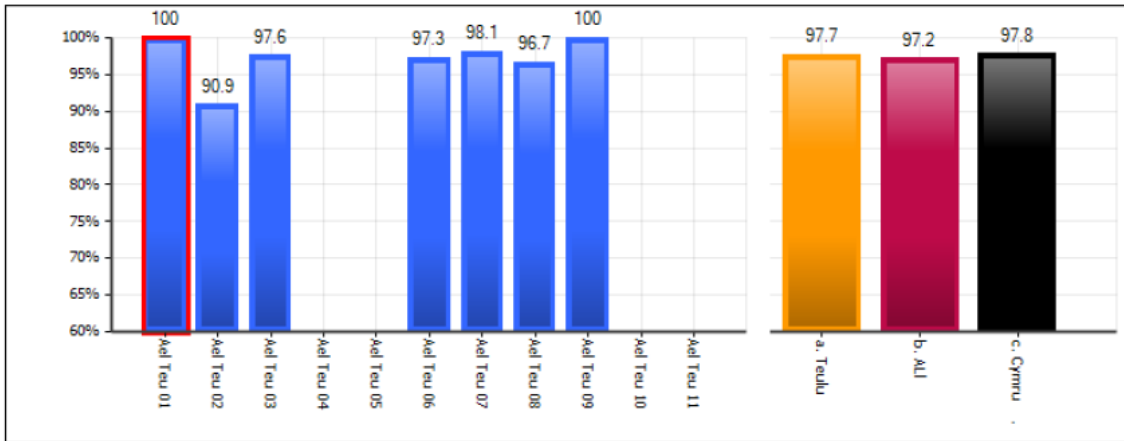


Every pupil succeeded to achieve the Threshold Level 3 (for the 6th year out of 7). This was 2.8% better than the average for Gwynedd and 2.2% better than the Wales average.

(Data source: All Wales Core Data set Welsh Government)



1.1b Cymharu teuluoedd (Noder: mae'r echelin-y yn y siart hwn yn rhedeg o 60% i 100%)

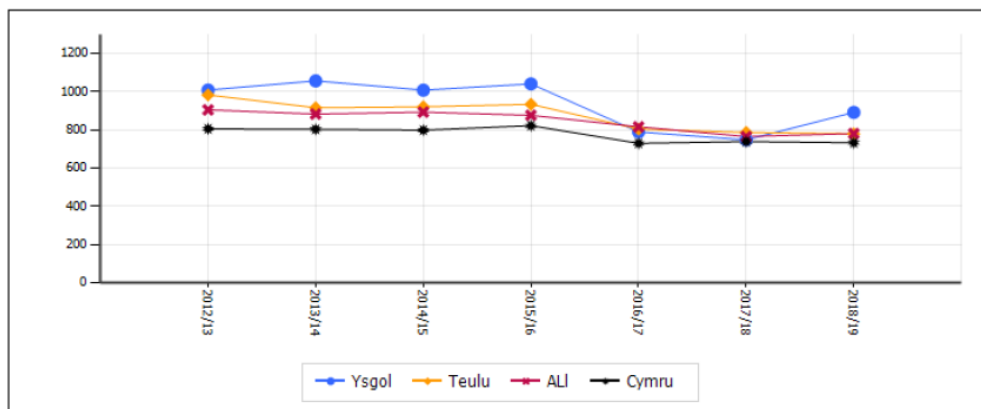


The graph shows that the performance of our pupils at Threshold Level 3 was better than all the other schools in our family of schools (except for one with the same result, including 3 local schools)

86% of our pupils achieved 2 or more A* to C grades (A Level or equivalent).
 100% achieved 2 or more A* to E grades (A Level or equivalent).

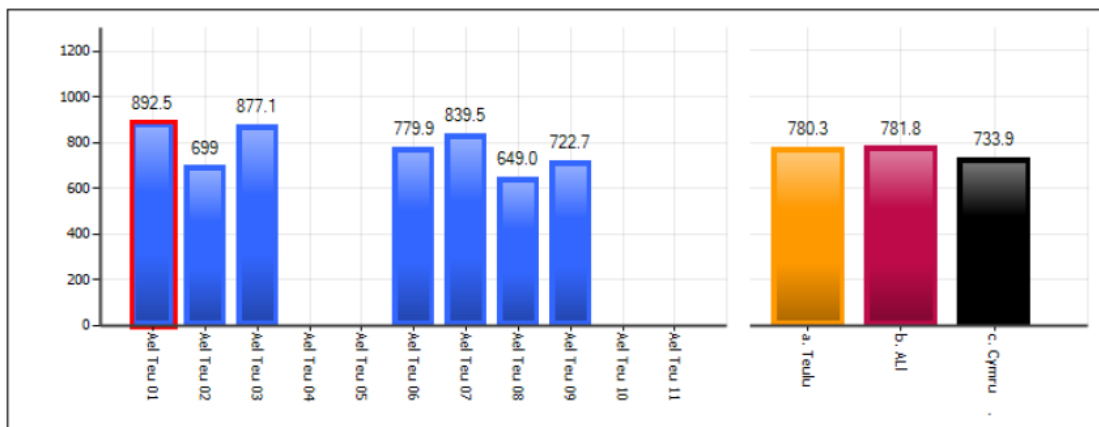
Sgôr pwyntiau cyfartalog ehangach

1.2a Sgôr pwyntiau cyfartalog ehangach ar draws pob pwnc



Our pupils succeeded in achieving a much higher Average points score than the other schools in our family of schools (including 3 local schools), scoring 892 points on average, as compared to 782 for Gwynedd and 734 in Wales.

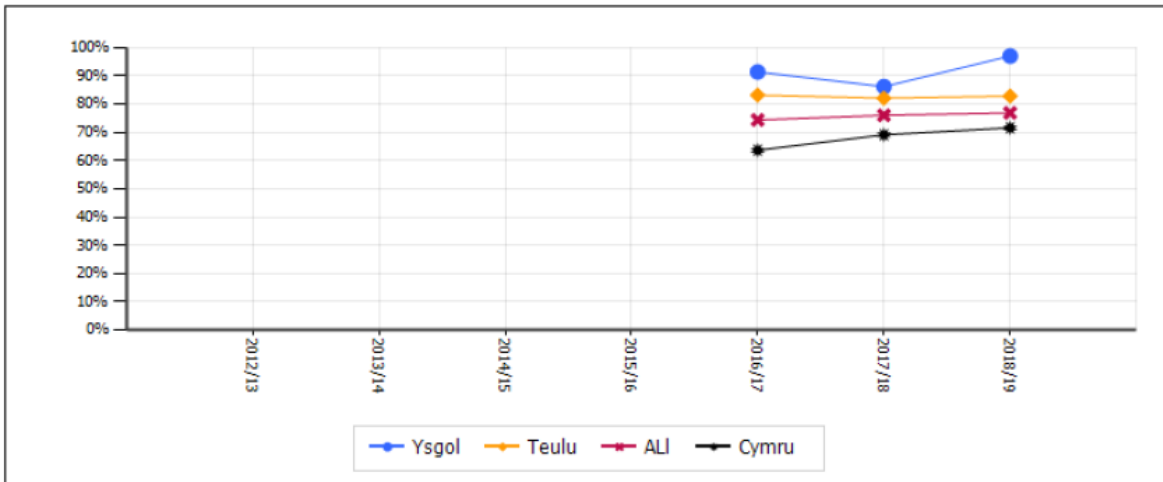
1.2b Cymharu teuluoedd





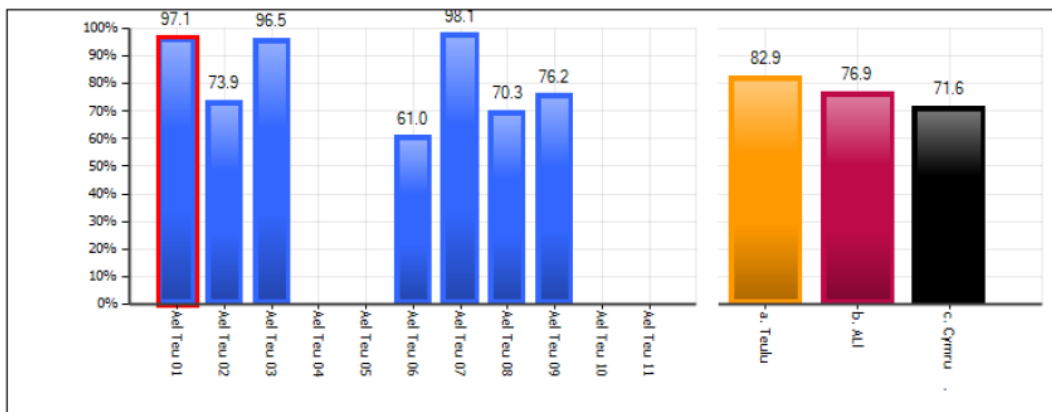
Bagloriaeth Cymru - Tystysgrif Her Sgiliau - lefel uwch

1.6a % y rhai 17 mlwydd oed sy'n cyflawni



97% of our pupils achieved the Skills Challenge Certificate, compared to 76.9% in Gwynedd and only 71.6% in Wales.

1.6b Cymharu teuluoedd



The number of pupils from Ysgol Dyffryn Nantlle securing admission to the University or College of choice is outstanding, with nearly every pupil in the last seven years who applied for University, gaining admission to the course of choice.

The data from the Welsh Government for 2015-16 shows that of the pupils who have left Ysgol Dyffryn Nantlle including our 6th form pupils, 36.6% are in Sustained employment & sustained learning compared to 26.8% Nationally.

42.3% are in Sustained learning only – compared to 31.8% Wales average.

91.5% are in Sustained positive destinations with only 83.7% Nationally.